



AMATEUR BOAT BUILDERS' ASSOCIATION

October November 2019

MY FAVOURITE BOAT

HMY BRITANNIA



Following our 2019 AGM, ABBA members were invited to tell us about their favourite boat or boats. Newly elected President Rob Bingham showed us some photos of the Royal Yacht Britannia taken on a recent trip to Edinburgh where Britannia is on permanent display and open for the public to tour.

First a little history and background. Britannia was launched from the John Brown & Company shipyard in Clydebank, Scotland, on 16 April, 1953. During the 44 years of her life, she sailed more than one million miles, the equivalent of once round the world for each year, calling at more than 600 ports in 135 countries. Britannia was manned by 220 yachtsmen, 21 officers and three season officers and a Royal Marine band of 26 on royal tours.

To Her Majesty The Queen, Britannia provided the perfect Royal residence for glittering state visits, official receptions, Royal honeymoons and relaxing family holidays. For Great Britain, she was a majestic symbol of the Commonwealth and a proud ambassador generating billions of pounds in

trade deals. For the Royal Family and dedicated crew of Royal Yachtsmen, she was home. Today, Britannia is a five-star visitor attraction and exclusive evening events venue in Edinburgh.

Britannia is 412ft of streamlined elegance, with no rivet marks and no name on her side. She was the only vessel in the Navy to have its own 24-hour laundry. Intended to double as a hospital ship, Britannia was fitted with stabilisers and has what is considered a large laundry, although it hardly looks big in relation to the requirements of a complement of 270 officers and crew needing to be spotlessly turned out, often in sweltering temperatures. She was the only ship in the world whose captain, by tradition, was always an Admiral (until 1995, when a Commodore was appointed). Orders were given to the ship's company by hand signal to preserve tranquillity.



The 1930s racing yacht Bloodhound, moored beside Britannia and owned by The Queen and The Duke of Edinburgh from 1962 to 1969, can be hired for private day-sailing from Oban Marina around Scotland's west coast. She is manned by an experienced crew, including former royal yachtsmen.

The wheel came from Edward VII's racing yacht, also named Britannia.





Facilities included a garage for a Phantom Five Rolls-Royce or, occasionally, the royal Land Rover. The Rolls could only be squeezed into the garage by removing the bumpers and winching it on and off the ship was no easy task.



Some of the furniture was designed by Prince Albert in 1856





Her Majesty's bed linen had been bought for Queen Victoria's bedroom on the previous royal yacht, the Victoria and Albert. It's embossed with the personal monogram 'HM The Queen



She was the last ship in the Royal Navy in which the sailors slept in hammocks.

Past President and newly elected committee member, Chris Davis took us on his journey to find the perfect boat. It started with his father and ABBA member, Don Davis who has been an amateur boat builder from before WWII. Some of Don's ability and enthusiasm rubbed off on Chris. Initially together with Don and later by himself, Chris built and successfully raced a number of small sailing dinghys. More detail can be found on the ABBA website www.abba.org.au, Library, Newsletter Oct Nov 2014.



Some of the early boats Chris sailed on. Good fun and a great way to learn but not his ideal boat.

Chris became the proud owner of Sequana, an uncharacteristically round bilged Boro designed masthead sloop. She is 28 feet long, has a beam of 10 feet and is shallow draft – drawing three feet with her centreboard up and five feet with it down. Chris still has her and she has served the family well on the river and holidaying at Rottneest but is still not the perfect boat for Chris.



In 1987, Chris found a character vessel crying out for restoration. Argosy, a jarrah plank gaff cutter, was (and still is) his next major project. Read more about Argosy on the ABBA website www.abba.org.au, Library, Newsletter Oct Nov 1999 and Sept Oct 2007. Argosy will again be a great boat with many fine attributes but, Chris doesn't believe it is truly perfect.





Chris has sailed many times on former ABBA member Peter Leggatt's exquisitely built and maintained timber planked 31 ft Carmen class sloop, Restless III.

Restless was built with offshore cruising in mind and has sailed well over 16,000 nautical miles. Until recently Chris considered this as near to perfect as you could get. For more details of Restless III and Chris's own boat, Sequana visit the ABBA website www.abba.org.au, Library, Newsletter Jul Aug 2012.

Chris attended the 2019 Wooden Boat Festival and over breakfast at his accommodation in Hobart got talking to an American visitor named Chuck Paine. Chris struck up a friendship with Chuck and soon found out that he was in Hobart to build and display one of his boats at the Festival. "Chuck has been designing yachts professionally since 1972 and to date there are approximately 1000 yachts afloat which have evolved from his hand." You can find out more at www.chuckpaine.com.

Chris explored the website and found what he considers to be his favourite boat. He is just waiting for his Lotto numbers to come up! The 36' EXPANNIE is an expanded version of Chuck Paine's own yacht named ANNIE. EXPANNIE has many of the features that Chris has liked in other boats all rolled into one magnificent package.



36' Offshore Voyager EXPANNIE

DIMENSIONS

LOA: 36' 3"

LWL: 30' 0"

BEAM: 11' 8"

DRAFT: 5' 2"

DISP, 1/2 load: 18,125 lbs

BALLAST: 7,000 lbs

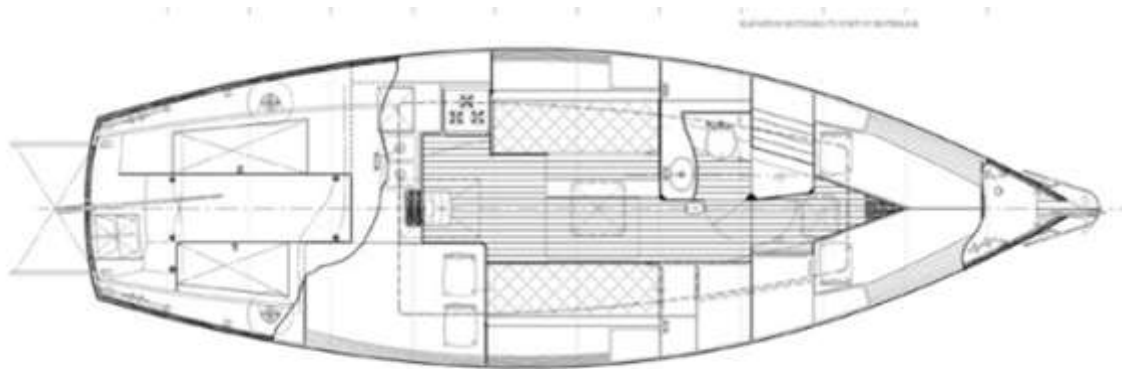
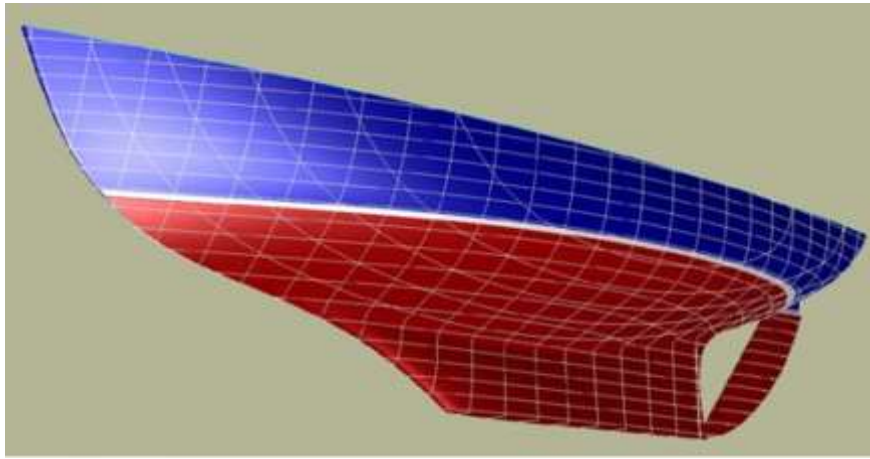
SAIL AREA (100% fore triangle): 645 sq ft

SAIL AREA (IMS): 715 sq ft

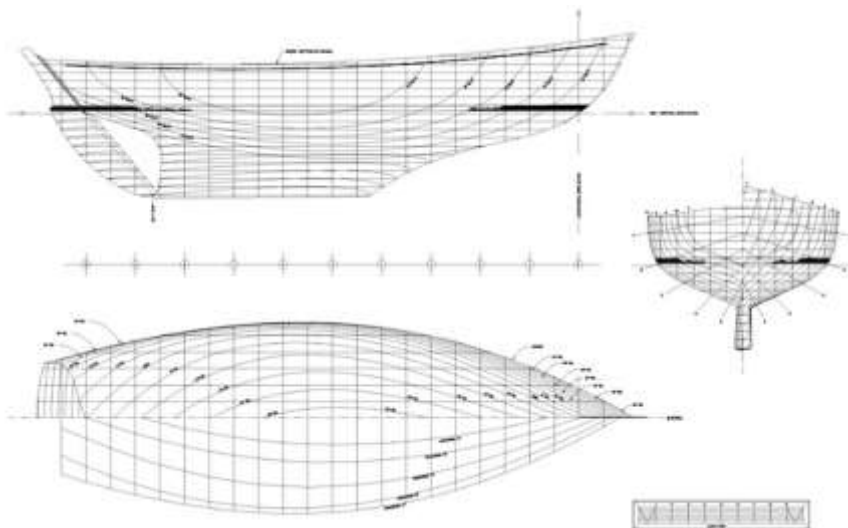
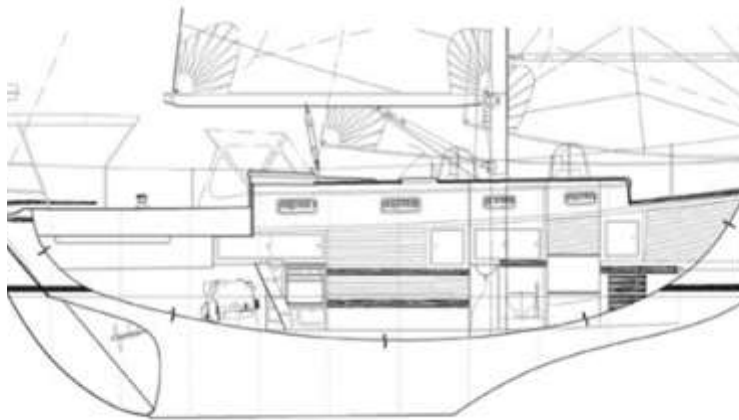
SA/DISP: 16.86

SA/DISP (IMS): 18.70

DISP/L RATIO: 250



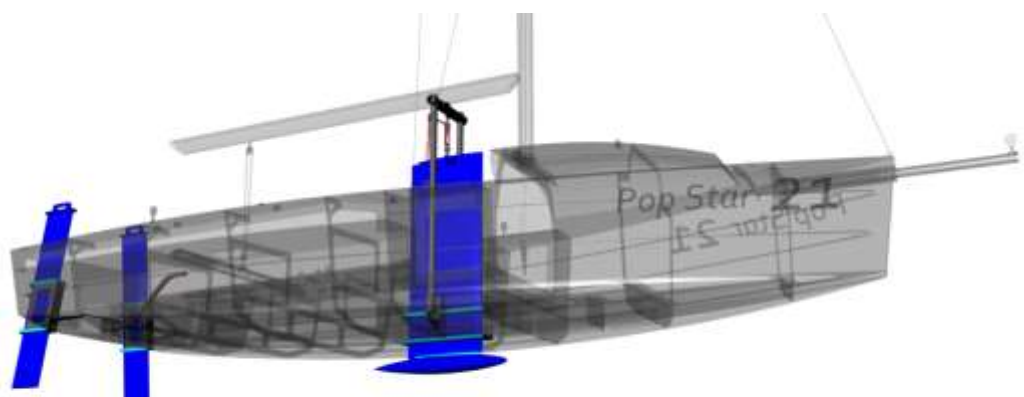
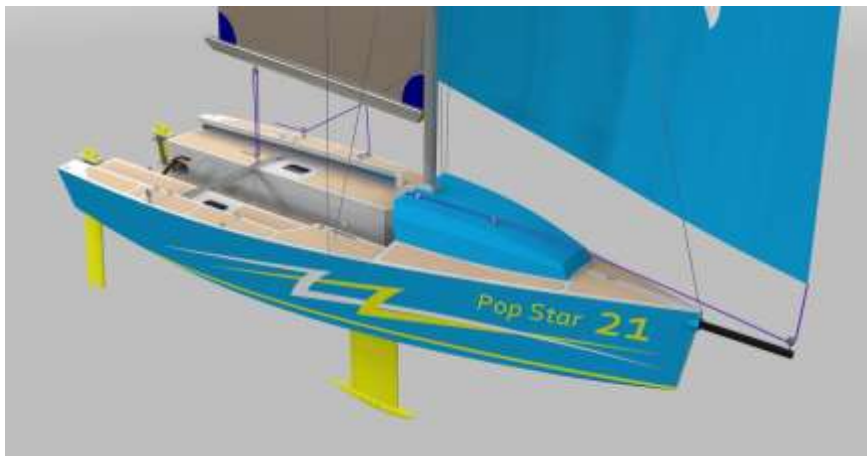
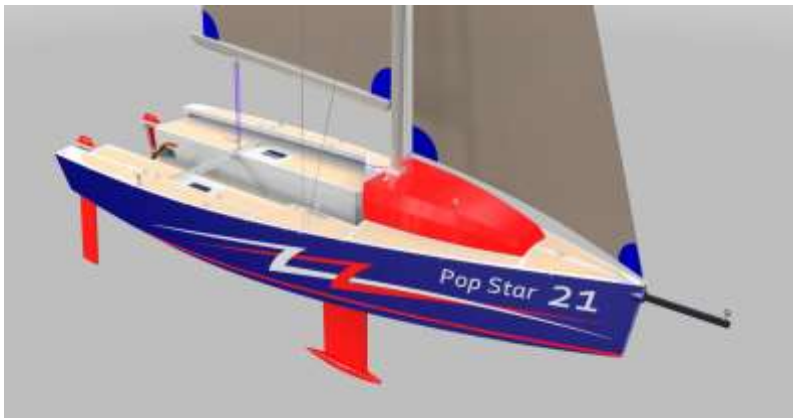
EXPANNIE's arrangement plan



Newly re-elected committee member, Luis Gouveia is a naval architect based here in Perth. There are over 50 designs for amateur boat construction in a range of materials on their website, yachtdesign.com.au. Visit their website or come along to an ABBA event and talk to Luis directly about stock plans or custom designs.



Dealing with so many boats, it was very difficult for Luis to decide on a perfect boat but he managed to narrow it down to two. The first was a fun day-sailer, the Pop Star 21. It is a versatile design, capable of exploring shallow waterways with its retractable keel and dagger rudder, simple to assemble and disassemble to maximise sailing time and trailable so it could be kept at home and taken to different places. It is also fun to sail, either for enjoying a day-sail with family or friends, or experiencing the thrill of high performance with a competitive crew on board.



Luis's second favourite is a Samoa 34 and again like Chris is waiting to live the Lotto Life. The boat was designed as a blue water sailboat capable of accomplishing the most demanding cruising adventures while being fast enough for ocean racing. While having the necessary power to beat to windward when sailing close-hauled in heavy weather, it is a boat to be trusted in the worse conditions, while being cosy and functional for living aboard for long stretches.



Newly re-elected Secretary Bruce Cadee couldn't decide on his favourite boat so showed a range of timber boats he liked from his visit to the Old Gaffers Festival on the Isle of Wight in 2018.



WHEN ELECTRICITY AND WATER DO MIX

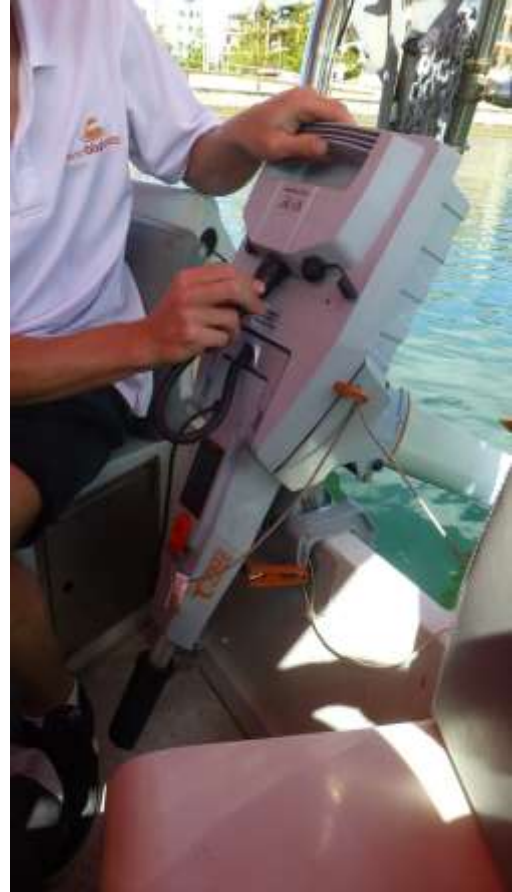


Our November Toolbox Visit saw us at the Mandurah Marina as guests of Gerd Heinen and Nathan of Eco Boats. Following our August Technical Meeting on the basics of electric propelled boats, this was an opportunity to get in front of the tiller and skipper one for ourselves.

We alternated between a 10 seater and a 6 seater ecobbqboat. The 10 seater was driven by a 2 kW (3hp equivalent) Torqeedo Travel 1103 electric outboard which is suitable for a vessel displacing up to 3 tonne. The 6 seater was driven by a 1 kW Torqeedo electric outboard which is suitable for a vessel displacing up to 1.5 tonne. The life of the integral lithium battery depends greatly on the output. Using about 35% of full power sees a fully loaded boat cruise nicely for 2.5 to 3 hours. Increasing the power to maximum sees only a small increase in speed but a much reduced battery life.

The 6 seater was initially powered by a Torqeedo Travel 1003 motor that has been in commercial use for 3 years. Due to the gearbox, there was some engine noise reminiscent of an electric drill. We switched to the latest model which was only unpacked that morning. It was almost silent. I think Roberto couldn't get used to the lack of noise and was making typical outboard sounds for himself.





The Old and the New
Torqeedo Travel 1003

Gerd's family-owned business offers donut-shaped fibreglass BBQ boats for hire – No boat licence required! Enjoy a 360° on-water dining experience aboard an electric boat providing seating for 10 around a table with a BBQ in the centre. Find out more or make a booking at ecobbqboats.com. Call Gerd on 0457 728 017 for bbq boats or electric propulsion systems. Choose your unique experience from self-drive tours to fully catered packages.

ADMINISTRATION NOTES

ABBA COMMITTEE

President	Rob Bingham	0419 995 422
Secretary	Bruce Cadee	0419 508 785
Treasurer	Andrew Minto	0415 852 333
Library	Rosemary Nayler	0427 717 050
Newsletter Editor	Bruce Cadee	0419 508 785
Website	Bruce Cadee	0419 508 785
General Committee	Chris Davis	0418 954 602
	Luis Gouveia	0477 172 881
	Bob Harrap	0407 991 901

Many thanks to Ken Potts for his valuable contribution to the association during this time as President. We welcome new member, Andrew Minto to the committee in his role as Treasurer. We also welcome back Former President Chris Davis to the Committee. His experience and guidance will be an asset to ABBA.

SPECIAL ADMIN NOTE:

Your 2019/20 subs are now overdue. Our annual Public Liability Insurance premium is over \$1,000 and we need your subs to help pay for it. Please pay in cash at a meeting or preferably pay your \$30 annual subs by bank transfer from your computer or phone app. Our BSB is 066130 and account is 10168343. Please include your name in the description. Contact Bruce Cadee on 0419 508 785 or cadeefamily@bigpond.com if you want to check if you're financial.

DECEMBER MEETING

Our next Technical Meeting will be held as usual in the Heritage Room at the South of Perth Yacht Club, 7:30 pm for an 8:00 pm start on Wednesday 4th December. Our presenter will be our new President, Rob Bingham who will talk about the 5 year restoration of his classic 1943 Halvorsen launch "KARRAWA", co-owned with Ashley Wilson.

This will be our last 8:00 pm start for Technical Meetings. From next year we will start our presentations at 7:30 pm and encourage people to roll up from 7:00 pm. This change will allow more time for socialising and discussion over a tea or coffee after the meeting.

CHRISTMAS GET TOGETHER

As usual, our Christmas Get Together will take the place of our Toolbox Visit, due in early January. This year we are doing something different. Committee member Bob Harrap has kindly arranged for ABBA to tour the Replica Ship, DUYFKEN on Saturday 14th December between 12:30 pm and 2:00 pm. The ship was built in Fremantle to help tell the little known story of Australia's first recorded European visitors. The DUYFKEN will be moored at the fueling jetty of South of Perth Yacht Club.

This will be followed by the traditional sausage sizzle just up the hill at Heathcote Reserve, 58 Duncraig Rd, Applecross. Feel free to bring your wives and girlfriends (though probably not both) or have them join us from 2pm under the trees at Heathcote.

HOW YOU CAN HELP ABBA— A number of a recent new members learnt about us from Brochures picked up at their yacht club. If you are a member of a club, association or workplace where you can leave some of our brochures, please contact Bruce Cadee on 0419-508 785 or at cadeefamily@bigpond.com who will happily arrange a supply for you.

ADMINISTRATION NOTES (Cont'd)

ABBA LOGO

Members are reminded that Bruce Cadee has made arrangements with Shaun Luong of Image Embroidery at 26 Tulloch Way, Canning Vale (Phone 9456 2324 Mobile 0403 250 389) for an embroidered ABBA logo. The logo can be applied to your own clothing (assuming it can be accommodated in their equipment) or to shirts, caps or hats purchased through Image Embroidery. Feel free to call in on Shaun to look at the limited range of clothing he has on site or visit the following web sites to choose your preferred style, size and colours. The weblinks below are only examples of the wide range available. Half chest measurements are included on the web sites to help ensure you select the correct size. Ladies styles are also available.

Clothing (excluding Logos)

Style 1300 – Aussie Pacific Mens Murray Polo, Navy/White/Ashe or White/Navy/Ashe - **\$20.00 + GST each**

Weblink: http://www.aussiepacific.com.au/the-murray-polo-navy-white-s?color=Navy%2FWhite%2FAshe&primary_color=Navy&secondary_color=White

Style 1304 – Aussie Pacific Mens Eureka Polo, Navy/White/Ashe or White/Navy/Ashe - **\$21.00 + GST each**

Weblink: http://www.aussiepacific.com.au/mens/polos/eureka-polo-sky-navy-s?color=Sky%2FNavy%2FAshe&primary_color=Sky&secondary_color=Navy

Hats/Caps (excluding Logos)

Style 4199 – Headwear Brushed Heavy Cotton Cap, White/Navy (many other colours available too) - **\$6.50 + GST each** **Weblink:** <http://au.headwear.com.au/productDetails.cfm?&prodID=53&prodCatID=2&pageNumber=1>

(Also refer poly/cotton legionnaires hats Styles 4057 or 4126 for maximum sun protection under website sub heading 'Hats, Visor & Beanies' <http://au.headwear.com.au/productList.cfm?&pCategoryID=7>)

Style 4199 – Headwear Brushed Heavy Cotton Cap, White/Navy (many other colours available too) - **\$6.50 + GST each (includes poly/cotton legionnaires hats for maximum sun protection under website sub heading 'Hats, Visor & Beanies')**

Weblink:

Style 4223 – Brushed Sports Twill Bucket Hat, White/Navy (many other colours available too) - **\$8.00 + GST each**

Weblink: <http://au.headwear.com.au/productList.cfm?&pCategoryID=7&page=2>

To make your annual membership even more value for money, ABBA will pay for up to 2 logos per financial year to be applied to your items of clothing. The current cost to ABBA is \$7.15 per logo. There is no intention for this to be an ABBA uniform so the choice of style and colour is totally yours. If you are seen wearing the logo while building, working on or using your boat or anywhere for that matter it might get people asking questions and wanting to join our association. You are free to deal direct with Image Embroidery but please ensure you get an itemised invoice showing a separate price for the logo and present this to our Treasurer for reimbursement. Bruce Cadee is happy to take orders and liaise with Image Embroidery if you wish.